

## How is quality assessed?

Early years staff in the Private and States sectors work together using ongoing self assessment as a tool.

## Who will make sure the quality framework is in place?

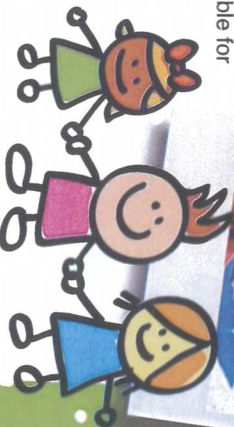
All early years staff will be trained to assess their own quality standards.

An Adviser from the Department for Education, Sport and Culture (ESC) will work in partnership with nursery staff to ensure that quality of service is consistently high.

In Private nurseries quality will be assessed as part of the annual registration. In the States' school nurseries quality assessment is part of the work undertaken by the Professional Partner to the school.

## How Can I Find Out More?

Please feel free to speak to the staff who are responsible for your child.



Produced by Working Group 1 (a) of the Early Years and Childcare Partnership

For further information visit  
[www.gov.je/Caring/Children/Childcare/Pages/EarlyYearsandChildcarePartnership\(EYCP\).aspx](http://www.gov.je/Caring/Children/Childcare/Pages/EarlyYearsandChildcarePartnership(EYCP).aspx)

## Our Aspirations for a Pre-School Quality Framework in Jersey

### Relationships

Respectful relationships between staff, children and parents. Clear leadership.

### Organisation

A well resourced environment indoors and outdoors.

Encouraging routine independence and flexibility.

Processes for monitoring and evaluating quality practice that are clearly understood by everyone.

### RELATIONSHIPS

### ORGANISATION

### LEARNING

### ACHIEVEMENT

### Learning

Activities based on children's needs and interests, supporting their independence.

Emphasis on language development, literacy/story and social skills.

Adults and children learning together.

### Achievement

Adults and children are confident in:

**Communication**  
**Collaboration**  
**Creativity**

## A Guide for Parents

## Jersey Pre-School Quality Framework





# What is the Jersey Pre-School Quality Framework?

## What is it?

It is a way of assessing whether Jersey's States and Private sector nurseries are providing a good quality service for our pre-school children.

## Why is it important?

From September 2009, parents have been able to choose between government funded pre-school education in the Private or States sectors. Parents often ask whether all nurseries offer their child the same standard of education.

Setting clear, agreed standards will ensure that every child has high quality opportunities for learning and development.

## What does it look like?

Early years staff in the States and Private sectors have worked together on the framework. They feel that there are four important components for high quality nurseries:

### Relationships Organisation Learning Achievement

The questions will help you check whether your child's nursery is meeting the standards for quality.



## 1. Relationships

This is the most important aspect. Children who are happy and want to go to nursery are ready to learn.

Children are entitled to learn with staff who are warm and responsive to individual needs, who have good relationships with each other and with parents. Parents are the child's first and most important educators.

### What you should ask:

How are parents and children made to feel welcome and involved at my child's nursery?

## 2. Organisation

Children thrive in an environment that is interesting and stimulating. They need to play outdoors as well as having somewhere to rest and be quiet.

There needs to be a balance between:

- flexibility and routine
- child-led and adult-guided activities

### What you should ask:

Does my child's nursery enable children to make choices about learning by providing good quality books and equipment?



## 3. Learning

Children learn from everything around them. Early learning is the basis for all later learning. Language development is the most important aspect of this. Children need to work with adults who understand child development.

### What you should ask:

How are children encouraged to think and talk by staff?

Do staff take time to listen and communicate at my child's level?

How are parents involved in their child's learning?

## 4. Achievement

Children who are confident communicators have a head start in learning. They also need to learn how to work and play with other children. Adults need to nurture young children's creativity. We aim to develop skills for life in young children.

### What you should ask:

Are children confident in the way they talk to each other and happy to learn?

Are they able to work and play with each other?

